

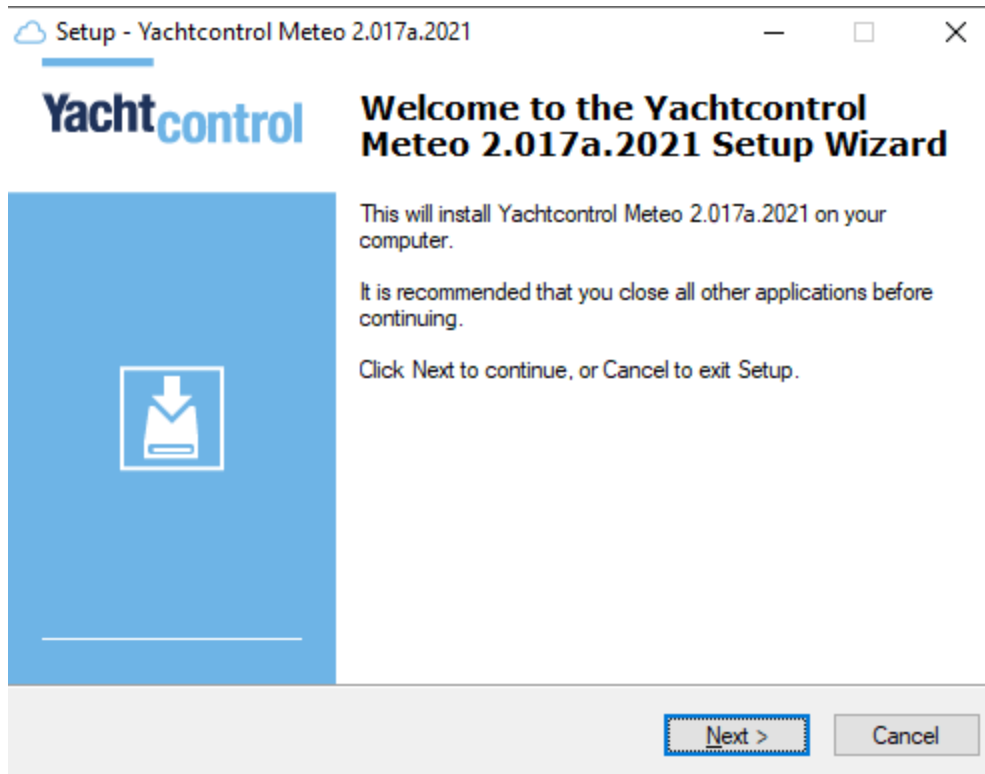
1 Installation

1.1 Step 1

Startschirm

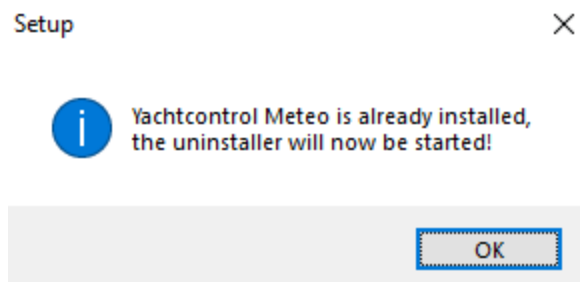
And now?

When the following screen presents itself, select *Next*.



Notice!

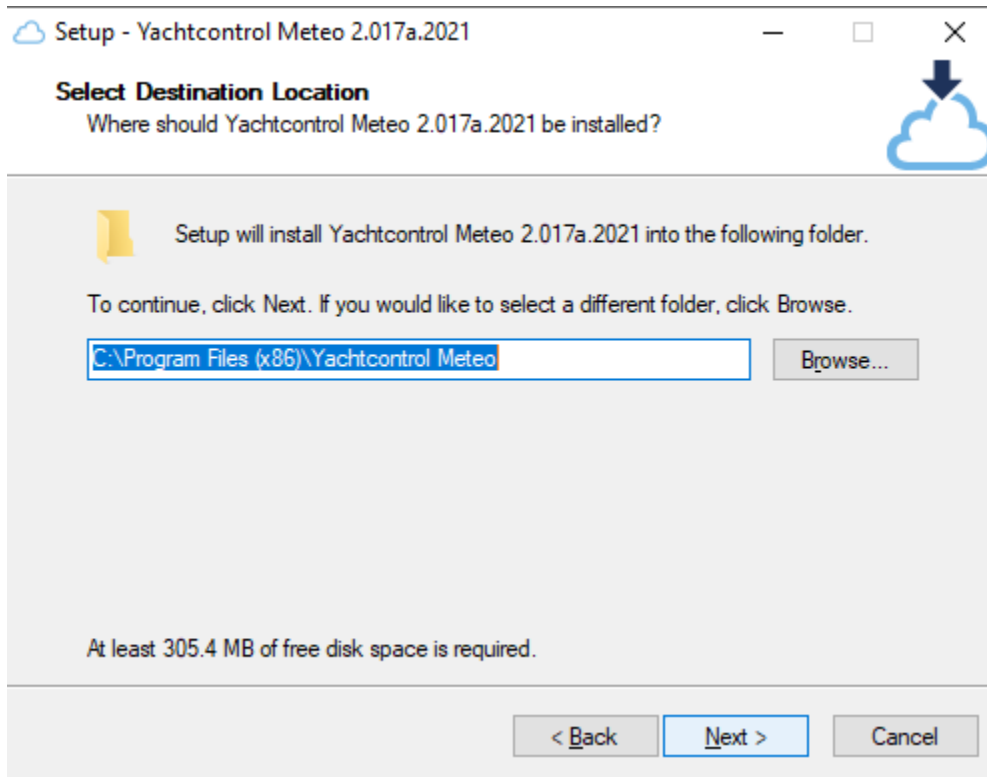
If a version of Yachtcontrol Meteo has already been installed, the following notice will appear. The old version has to be removed before installing the new version.



Click on *OK* and follow the instructions to remove the previous version.

1.2 Step 2

U are now presented the opportunity to change the location where Yachtcontrol Meteo is installed.

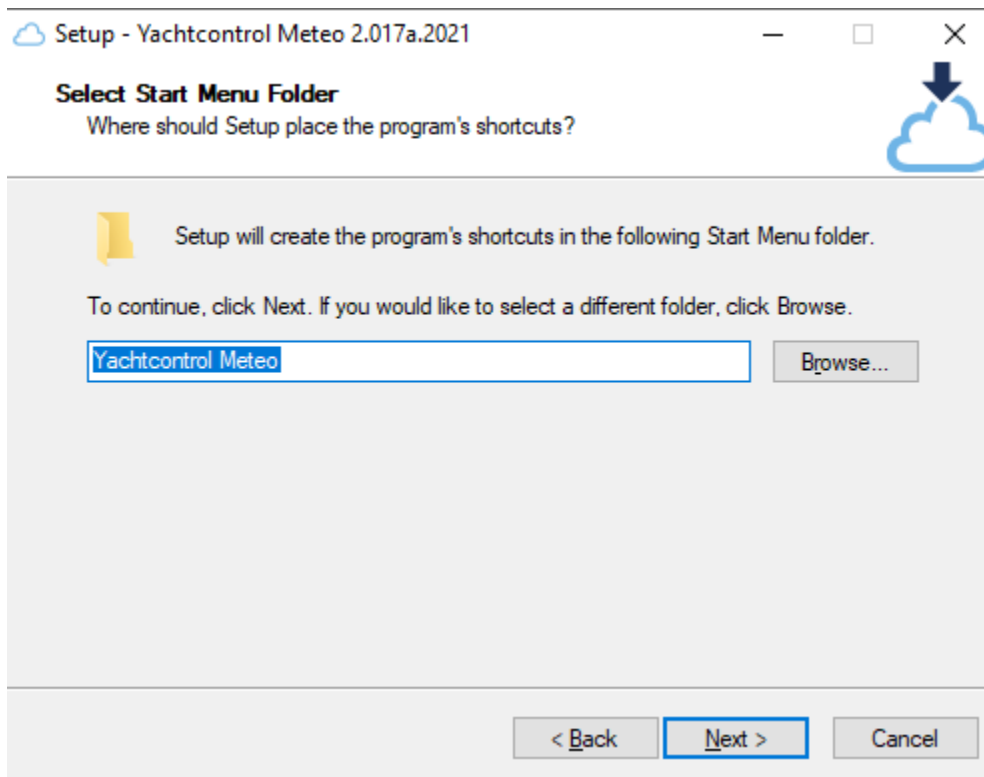


And now?

1. Change (only if needed or desired) the target destination, select Browse to do this.
2. Choose *Next* to continue.

1.3 Step 3

U are now presented the opportunity to change the destination in the start menu.

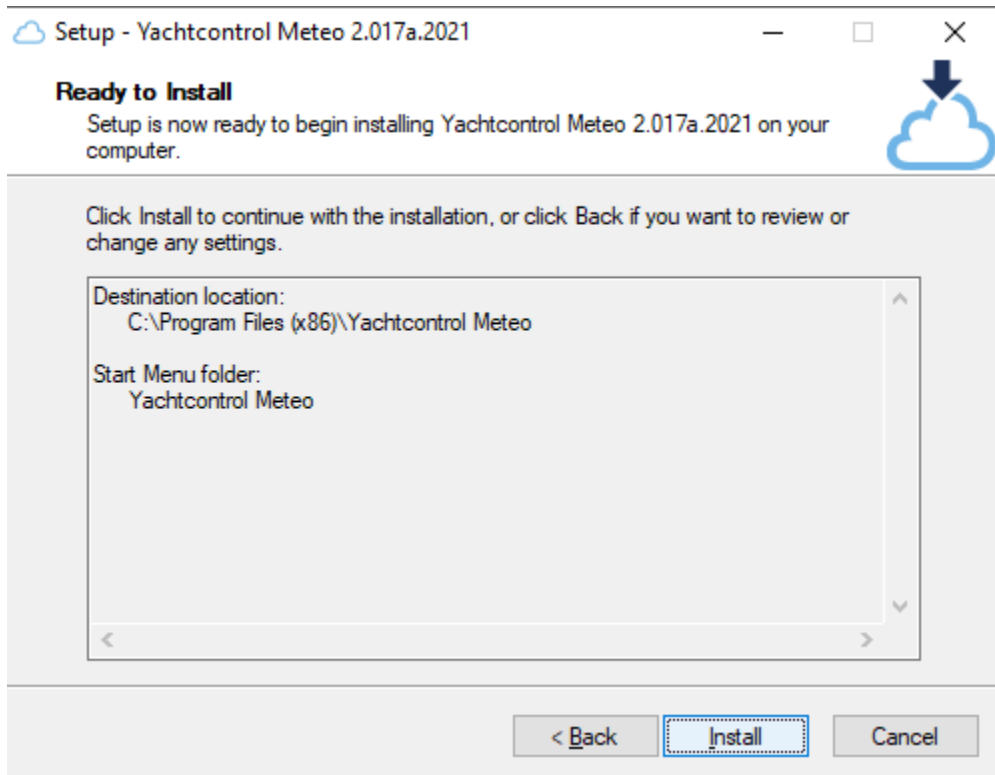


And now?

1. If desired, choose a different location for the Yachtcontrol Meteo shortcuts.
2. Choose *Next* to continue.

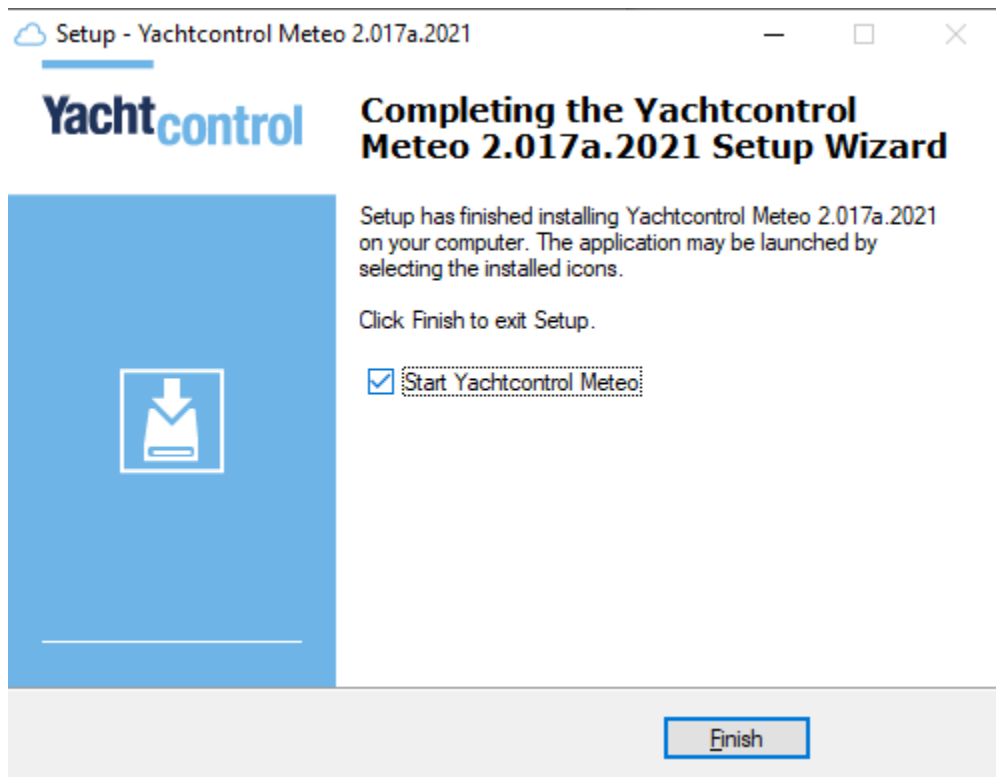
1.4 Step 4

Choose *Install* and wait for the installation procedure to conclude.



1.5 Step 5

Finish the Yachtcontrol Meteo setup.



And now?

1. Click on *Finish*.

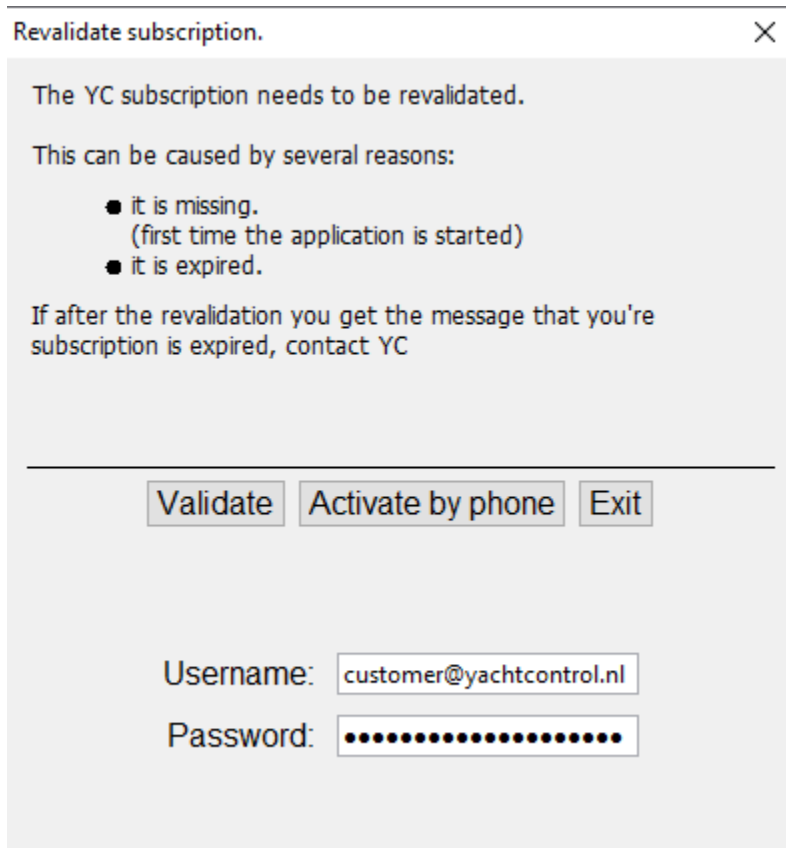
Tip:

Remove the checkbox if you do not wish to start the software immediately.

1.6 Step 6

Validation:

If you start Yachtcontrol Meteo for the first time, the following prompt will appear:



Revalidate subscription. ✕

The YC subscription needs to be revalidated.

This can be caused by several reasons:

- it is missing.
(first time the application is started)
- it is expired.

If after the revalidation you get the message that you're subscription is expired, contact YC

Username:

Password:

Validatie by Internet:

- Make sure your internet connection is available.
- Fill in your subscription details.

Example:

Username: northward@yachtcontrol.nl

Password: TotallySecret

- Select *Validate* and continue to Step 8

For validation by telephone:

- Choose *Validate by Phone* and continue to Step 7

1.7 Step 7

Validation by Phone:

The following prompt is presented to you:

Revalidate subscription. ✕

Follow the steps listed below to validate YC Network by phone.

- Call: +31 (0)38-3338336.
- Follow the instructions

Contact Yachtcontrol B.V. if you have any questions.

Username:

Computer id:

System date:

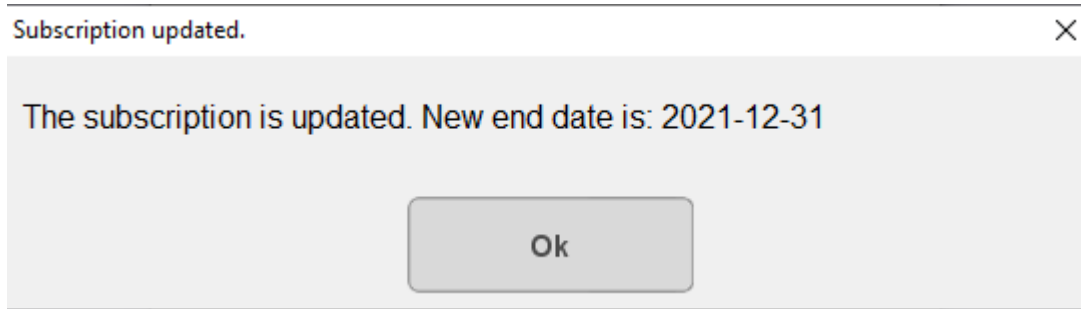
Offline activation code: - - - -
 - - -

- Fill in your username and call Yachtcontrol (+31 (0) 38-3338336).
- Fill in the offline activation code that the employee shares with you.

1.8 Step 8

Validation:

If validation is succesful, the following screen is shown:



You are now ready to use Yachtcontrol Meteo!

Notice:

If an error occurred instead of showing the prompt above, it can have a few causes:

Combination (username / password) do not occur.

You might have made a mistake in typing in your details. Please rewrite the fields and try again.

Your maximum amount of registrations has been reached. New registration denied.

You have installed the software on too many machines simultaneously. By default, we only allow our software to be installed twice. If it's installed for a third time, this notice is given. Please contact Yachtcontrol, and we can reset the ID's so you can install the software.

If there is any other error, please contact us for personal support.

2 Yachtcontrol Meteo

2.1 About Yachtcontrol Meteo

How does Yachtcontrol Meteo work?

Yachtcontrol Meteo is a program for retrieving worldwide information.

Yachtcontrol Meteo is build to retrieve concise information tailored to your selection.

Characteristics:

General:

- Works on Computers operating with Windows (Also works on Apple computers through Parallels or Bootcamp)
- Modularly built
- Different modules for weather information (Yachtcontrol Meteo) en navigation (Yachtcontrol Navigatie) work together through integration.

Yachtcontrol Meteo:

- Worldwide availability.
- Predictions up to 14 days.
- Detailed.

System Requirements:

Computer with at least 512 MB intern geheugen

Internet connection (Through ADSL, GPRS/UMTS , Wifi or Iridium)

Operating system: Windows XP, Windows Vista, Windows 7, Windows 8 en Windows 10

Yachtcontrol wishes you tons of fun and a safe voyage!

2.2 About starting and closing

Starting

Once installed and registered, Yachtcontrol Meteo is quickly started from the Desktop of your computer. Doubleclick the icon of Yachtcontrol Meteo. Yachtcontrol Meteo Assumes you currently have an internet connection.

Closing

Closing the application is done by the cross in the top-right corner.

2.3 About buttons and menu

The window of Yachtcontrol Meteo is divided as follows: Above is a bar with general buttons for control. To the right is a menu bar with which you can filter information.

Menu bar

The menubar (shown on the left), offers access to various services of Yachtcontrol Meteo. You can open various services by left clicking the triangle on the right of the service.

Buttons

Under Yachtcontrol there are the following buttons:

- Info Shows our latest information.
- Visit YC Website Opens the Yachtcontrol website in Internet Explorer.
- About Yachtcontrol Shows information about Yachtcontrol.
- Disclaimer Shows our disclaimer.
- Help Shows this help file.
- Configuration Allows you to change various configurations, such as your subscription, the language used in Yachtcontrol Meteo, and Iridium connection.

Buttons used by the Services Grib, RTTY and Harmonie

The services Grib, RTTY and Harmonie have some function buttons in the top menu bar. These buttons allow various weather information to be shown.



Zoom in, zoom out

This changes the scale of the chart.



Pan mode on/off

Pan mode on: You can drag the chart with left click to change your position.

Pan mode off: You can drag a rectangle with left click to zoom in on the selected area.



Animation buttons

Play button: Toggle animation on/off.

Slider: Manually choose a timestamp and display the animation position.

<< and >> buttons: Change the speed of the animation.



Layers

Change which layers you . This way you van filter which information is relevant for you.

2.4 About connection techniques

Yachtcontrol Meteo can make use of various different connection techniques. Depending on location and the moment of updating of the information, one or more of the following methods can be used:

- GSM Network (GPRS)
- UMTS / HSDPA (4x quicker than UMTS)
- Iridium (satelite)
- WIFI

One condition is naturally the right hardware configuration on board.

GPRS has excellent coverage in the Netherlands and abroad. In the IJsselmeer and coastal areas the signals are easily received with a fixed antenna up to 10 nautical miles off the coast. Through roaming partners abroad this technique can also be used in other countries. UMTS and HSDPA are quicker variants of the same service.

· Through Iridium connections can be made world-wide.

· With WIFI a wireless connection can be made with a nearby hotspot (such as a harbour office). In general this is a very fast connection.

Your advantages

· Everywhere internet and email: Making one connection with GPRS is sufficient to be online the entire day without extra costs

· You pay for what you get: only extra costs are calculated for sending or receiving information, not for the time of being online.

· By using Yachtcontrol Meteo combined with an Iridium telephone, a short connection can be used to fetch weather information.

Notice:

Never download large files through a mobile connection abroad. This can lead to very high unexpected costs. Foreign providers often charge €7,50 to €20,0 per downloaded MB.

2.5 About Iridium support

Yachtcontrol Meteo can retrieve information through Iridium.

Configuration:

In the configuration screen you can check a checkbox to make Yachtcontrol Meteo always use Iridium for retrieving information.

If you check the checkbox [*Always use Iridium*] the software shall make an internet connection through the Iridium device. Afterwards the files are retrieved from the Yachtcontrol server. After receiving the information, the connection is closed again.

The screenshot shows the 'Iridium' configuration screen. On the left is a sidebar with menu items: CONFIGURATION (gear icon), SYNOPSIS (weather icon), RTTY (antenna icon), GRIB GFS (F icon), GRIB GFS (F icon), and AREA SELECTION (square icon). The main area has tabs for 'Application', 'Services', 'Screen Settings', and 'Iridium'. Below the tabs is a checkbox labeled 'Always use Iridium'. Below that are several input fields: 'Iridium username:', 'Iridium password:', 'Iridium Access Point Name:', 'SIM pincode', 'Phonenumber:' (with the value '008816000025'), 'Dialup device:' (a dropdown menu), 'Serial port:' (a dropdown menu), and 'Baudrate:' (a dropdown menu with the value '19200'). At the bottom is a 'Save' button.

If you have an Iridium simcard through Yachtcontrol, than your details are already filled in. Make sure you have installed the Yachtcontrol Internet Connection Manager. Then select your dial in iridium device.

Your advantages:

- You can make a connection to the Yachtcontrol server from anywhere in the world.
- You pay for what you get: costs are only incurred for sending and receiving information. Once the data is received, the connection is closed.

By using Yachtcontrol Meteo in combination with your iridium phone (connection is measures by time unit) a short connection is sufficient for getting worldwide information.

Notice:

An Iridium connection is not fast. Try to fetch files as small as possible (for example by truncating the time interval, the data types and the selected area)

3 About Displays

3.1 Installing Iridium

Yachtcontrol Meteo can retrieve information by Iridium. For this, an Iridium device must be configured.

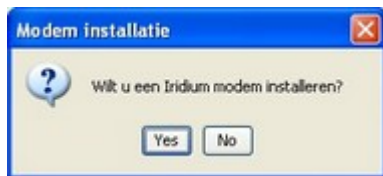
Configuring:

Step 1:

In the startmenu, browse to Yachtcontrol Meteo and choose Yachtcontrol Iridium Setup. If you are using Windows Vista or later, right click and choose "Run as Administrator".

Step 2:

When prompted if you wish to choose an Iridium device choose *yes*.



Step 3:

Connect the Iridium device with the computer and choose *OK*.



Once the Iridium phone has been paired with the computer, you will get some windows screens with which the drivers for the Iridium Phone. Make sure the supplied CD is in your CD drive.

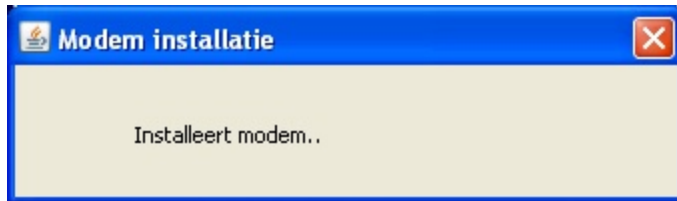


At the end of the installation on Windows you will receive the following notice:



Choose OK in the Yachtcontrol Iridium installation.

Yachtcontrol will now attempt to detect the modem. The following prompt is displayed:



3.2 Internet

With Yachtcontrol Meteo you can unlimited access to the internet.

Open Yachtcontrol Meteo. Next, click on Visit YC website. Internet Explorer will now be started for you.



3.3 GRIB GFS

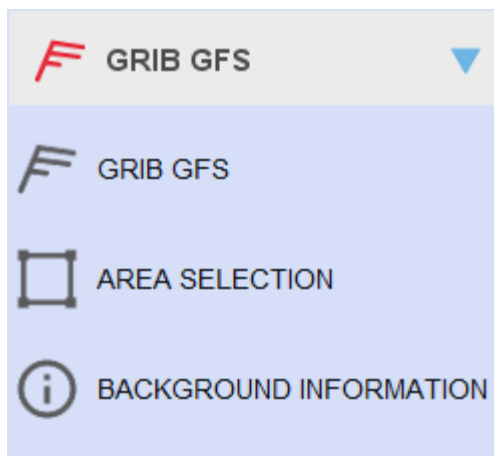
With the GRIB GFS Service, you have access to world wide weather information.:

- Windspeed

- Winddirection
- Wave height
- Wave direction
- Air pressure
- Temperature
- Rain
- Total cloud coverage

And now?

1. Open the service '*GRIB GFS*'.
2. Choose *Area selection*.



3. Chose the data types you are interested in.

Update

Data interval:
5 days

Each 3 hours

Data types:

- Wind
- Temp
- Pressure
- Cloud
- Rain
- Waves

Windoffset (kts):
0.0

Download size estimate:
190Kb with current selecti...

4. Drag an area on the chart from where you want to retrieve the predictions. Do this by left clicking and dragging an area of the map, then releasing the mouse button.
5. Choose *Update* from the top right. The information will now be downloaded. You will automatically be transferred to the chart.
6. Choose on the right side which layers you want to view on the chart.

Tip: Try not to choose too many layers simultaneously, otherwise the information / chart might be unreadable.

Other controls:

Zoom in, zoom uit.

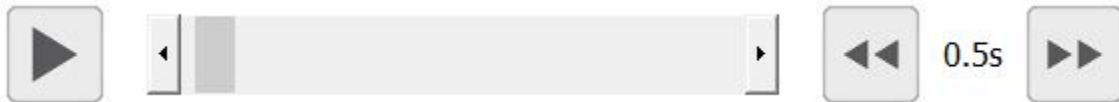
To change the scale of the chart.



Pan mode on / off

Pan mode on: You can drag the chart around by clicking and dragging.

Pan mode off: You can select a rectangle on the chart. When you release the mouse you will zoom in on the selected area.

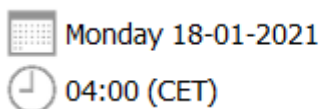


Animation buttons.

Play button: Turn the animation on / off.

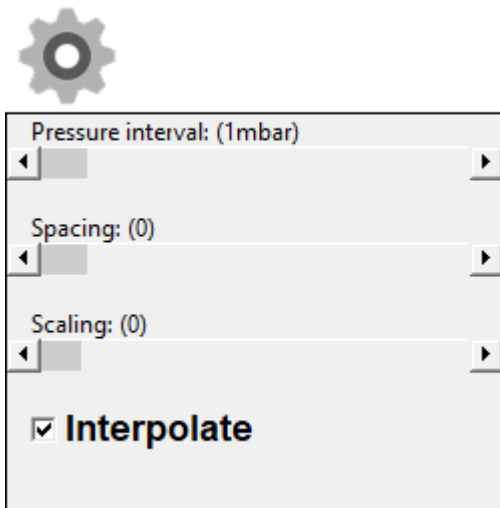
Slider: Manually choose timeslots on the prediction, or display the current step of the animation.

<< and >> buttons: Configure the speed of the animation.



Selected Date and timestamp and time selection buttons:

For manually choosing a timestamp to display information about.



Configurationbutton.

Here you can configure the following settings:

- Airpressure interval: change the steps between pressure lines.
- Spacing: Distance between arrows and text of other data types.
- Scaling: Size of the arrows for wind and wave information.

3.4 GRIB Harmonie

With the service GRIB Harmonie you have the following high resolution weerdata in and around The Netherlands:

- Wind speed
- Wind direction
- Air pressure
- Temperature
- Precipitation
- Total cloud cover

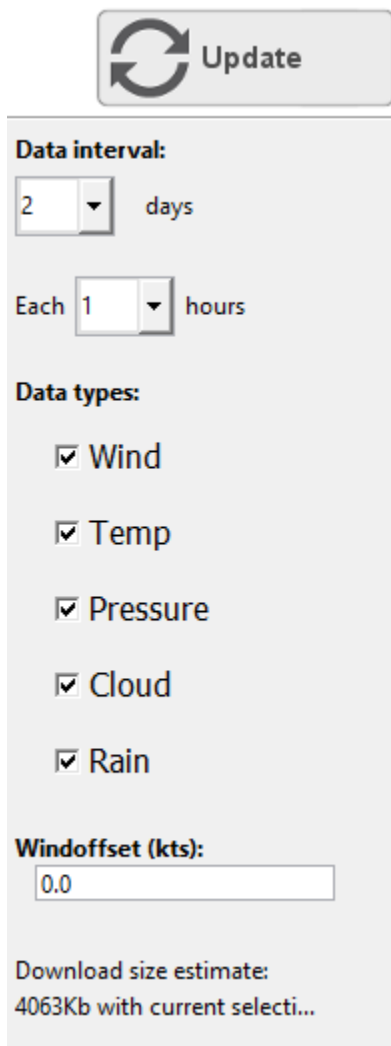
And now?

1. Open the service 'GRIB Harmonie'.

2. Chose op *Configuration*.



3. Select the Data types that you wish to download.



Update

Data interval:
2 days

Each 1 hours

Data types:

- Wind
- Temp
- Pressure
- Cloud
- Rain

Windoffset (kts):
0.0

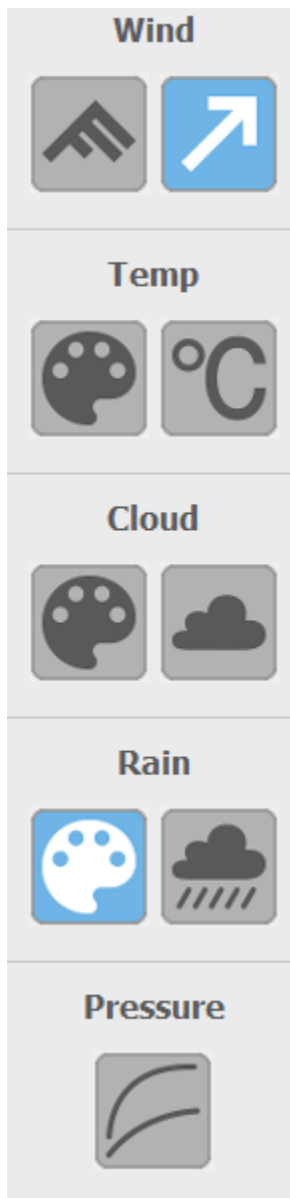
Download size estimate:
4063Kb with current selecti...

4. Choose an area on the chart for which you wish to have a prediction. Do this by clicking on the map, and dragging an area. Release the mousebutton to finish your selection.

On the top-right, choose Update. The information will now be retrieved. If there is a lot of

5. data, you will be prompted to confirm the download. You will automatically be transferred to the chart once the download is complete.

6. You can choose on the right which layers you wish to see on the chart.



Tip: Try not to choose too many layers, the information and chart might become unreadable.

Other controls:

Zoom in, zoom uit.

To change the scale of the chart.



Pan mode on / off.

Pan mode on: You can click and drag the mouse to drag the chart around.

Pan mode off: You can click and drag the mouse to select an area. Once you release the mouse you will zoom in on the selected area.

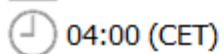
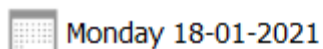


Animation buttons.

Play button: Turn the animation on / off.

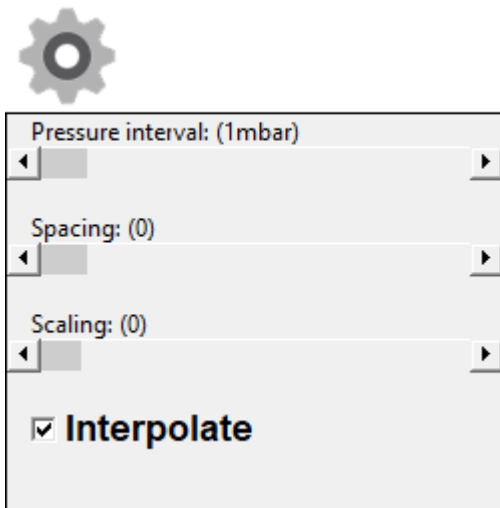
Slider: Manually choose time stamp or display the position of the animation.

<< and >> buttons: Change the speed of the animation.



Selected date and timestamp and the time selection buttons:

To manually choose a timestamp for which you wish to see information.

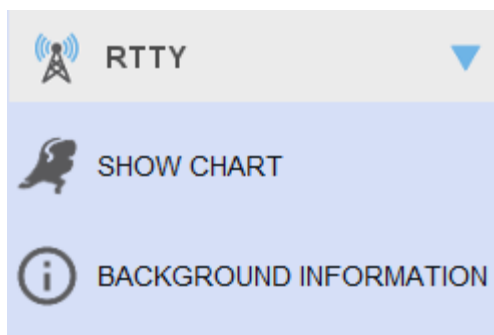


Configuration button.

Here the following parameters can be changed:

- Pressure interval: Change the distance between pressurelines on the chart.
- Spacing: Change distance between arrows / text of other data types.
- Scaling: Size of the arrows for wind information.

3.5 RTTY



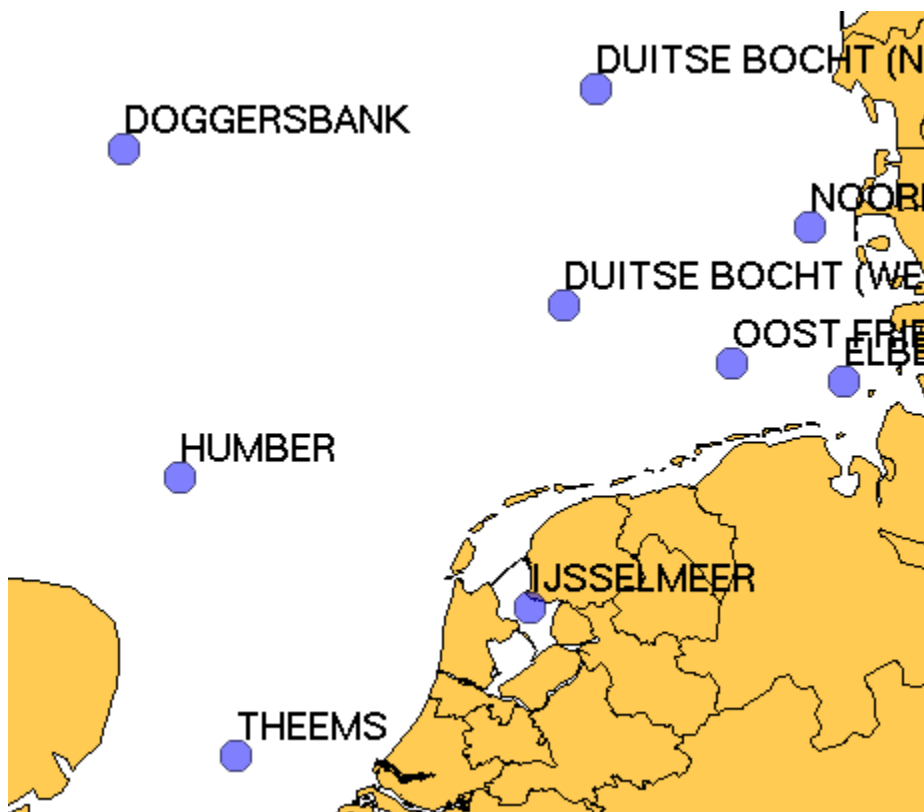
The RTTY service of Yachtcontrol is a digital version of the weatherinformation of Pinneberg. The sender in Pinneberg sends detailed watersport messages and predictions up to 5 days for the north and east sea.

RTTY stands for the method in which these messages are coded. Normally these messages can be received on a so-called Wetterbox on 147,3 Khz.

Yachtcontrol Meteo digitizes these messages and stores them on our server to share them through this software.

And now?

1. Open the service RTTY.
2. Choose 'Show chart'.
3. On the top-left, choose the button *Show*.
4. On the top-right, choose the button *Update All*.



Result:

If any deprecated points exist, they are removed. New points are automatically added as well. The latest information for all points is also retrieved.

3. Choose a location.

DUITSE BOCHT

Run date: Monday 01-07-2019

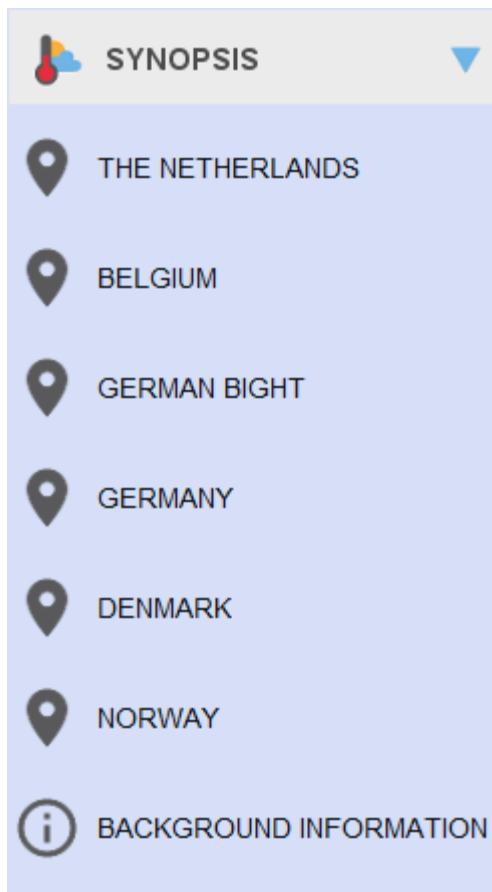
day	date	time	WR	WK	WM	GH	various
Ma.	01-07	0	WSW	4.5		.5	
Ma.	01-07	12	W	6	7	.5	
Di.	02-07	0	NW	5-6	6-7	2	
Di.	02-07	12	NW	4.5		2	
Wo.	03-07	0	NW	4		.5	
Wo.	03-07	12	NNW	4.5		.5	
Do.	04-07	0	NW	4.5		2	
Do.	04-07	12	WSW	5		.5	
Vr.	05-07	0	SW	6	7	2	
Vr.	05-07	12	WNW	6.7	8	4	
Za.	06-07	0			8	4	
Za.	06-07	12	NW	6	7-8	.5	

WR = Wind Direction - WK = Wind force
WM = Wind force max. - GH = Wave height

Close Update

5. Read the information.
6. Once finished, choose the button close at the bottom.

3.6 Synopsis



By the synopsis service the weatherprediction of the Netherlands, German Bight and the East Sea are visible.

The current prediction as well as a multiple day prediction can be retrieved as a text message.

And now?

1. Open the service Synopsis
2. Click on the Synopsis of the area you want information from.
3. Choose *Update* on the top right to retrieve the latest information.

Result

The prediction and the multiple day prediction are being updated.

Example:

Synopsis Nederland

De weersverwachting van het KNMI voor vandaag en morgen
Opgesteld op maandag 18 januari 2021 om 02.56 uur.

Half tot zwaar bewoekt en een enkele bui. Dinsdag regenachtig

Vannacht zijn er opklaringen en blijft het op de meeste plaatsen droog. M.u.v. het zuiden en westen kan het lokaal glad zijn door bevriezing van natte weggedeelten. De minimumtemperatuur loopt uiteen van 5°C vlak aan zee tot iets boven het vriespunt in het oosten van het land. De westelijke wind is zwak tot matig.

Vandaag overdag is er vrij veel bewolking en vooral in de middag komen er enkele lichte buien voor, met name in het noorden en oosten van het land. De maximumtemperatuur ligt rond 6°C. De zuidwestelijke wind is matig, aan de kust vrij krachtig tot krachtig.

In de nacht naar dinsdag is het bewoekt en gaat het van het westen uit regenen. De minima lopen uiteen van 5°C aan de kust tot 2°C in het oosten. De zuid- tot zuidwestenwind is matig, in de kustgebieden en boven het IJsselmeer vrij krachtig en langs de westkust krachtig tot hard, 6-7 Bft.

Dinsdag overdag is het bewoekt en regenachtig, in de middag zijn er vooral in het zuidwesten ook droge perioden. De maxima lopen uiteen van 10°C in het noordwesten tot 7°C in het zuidoosten. De zuidwestenwind is matig, in de kustgebieden (vrij) krachtig en in de middag langs de westkust mogelijk hard, 7 Bft. (Bron: KNMI)

Verwachting (middel)lange termijn

Vooruitzichten

	Di	Wo	Do	Vr	Za	Zo
Zonneschijn (%)	20	10	30	20	20	30
Neerslagkans (%)	90	60	90	50	60	80
Neerslaghoeveelheid (mm)	2/10	0/2	3/8	0/2	1/5	1/7
Minimumtemperatuur (°C)	3	5/6	5/7	2/4	0/1	0/2
Middagtemperatuur (°C)	9	11/12	9/11	6/8	5/7	4/8
Windrichting	ZW	Z	ZW	W	ZW	ZW
Windkracht (Bft)	4	5	5	4	4	3

Uitgifte: 18/01/2021 02.56 uur LT

Vooruitzichten lange termijn

zondag 24 januari tot en met zondag 31 januari

Vrij grote kans (ca. 70%) op een wisselvallig weertype met temperaturen rond of boven het langjarig gemiddelde. De kans op een kouder weertype met soms ook (natte) sneeuw bedraagt ca. 30%.

Uitgifte: 17/01/2021 04.20 uur LT

Langjarige gemiddelden, klimaatnormalen 1991-2020

Periode	Januari				Februari	
	1-10	11-20	21-31	1-10	11-20	21-28
Minimumtemperatuur (°C)	1,4	1,6	0,5	0,9	0,8	1,6
Maximumtemperatuur (°C)	6	6,3	5,3	5,9	6,5	7,4

Uitgifte: 17/01/2021 04.20 uur LT

3.7 VHF Messages

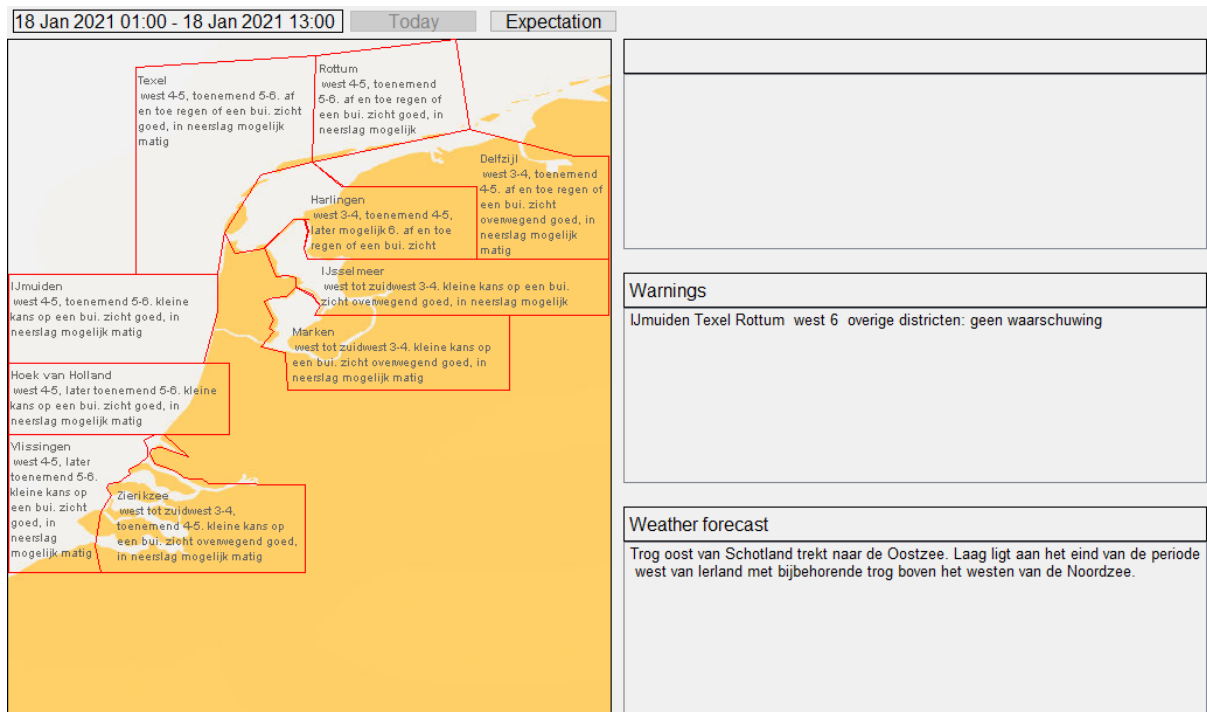
By VHF Messages you can receive weather messages for the Northsea and the Dutch coastal area. You can choose messages of today and prediction.

And now?

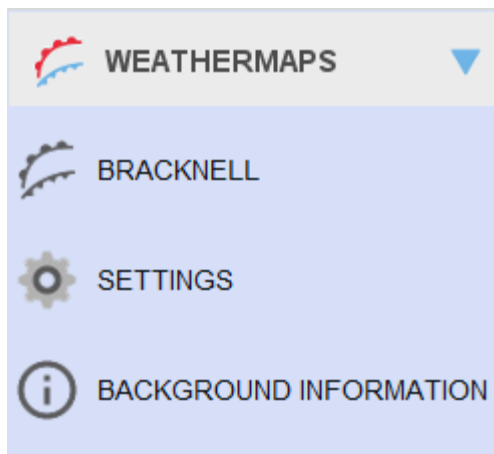
1. Open the service VHF Messages.
2. Select the area you wish to view.
3. Choose the button today or prediction.
4. On the top right, choose Update.

Result

All messages are placed in their relevant locations. By hovering the mousepointer over the regions, detailed information is displayed (useful in case there is a lot to read). Warnings and weather information is shown in the two bottom panels on the right side.



3.8 Weathermaps



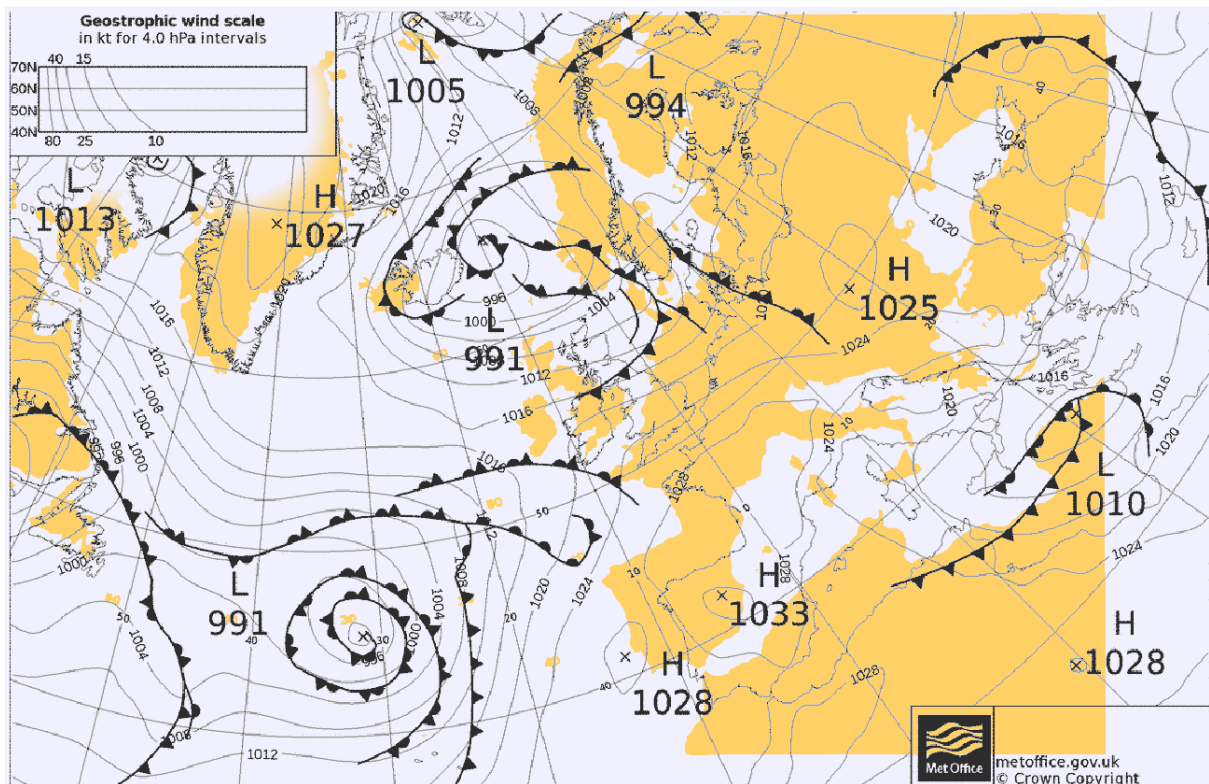
Calculate wind

Weathermaps are often complicated and difficult to interpret. Yachtcontrol has devised an easy formula into the software to calculate the windforce and speed between two isobars. This can be done simply by dragging a line between two isobars.

The line must be drawn from the high to the low pressure. The pressure differential must be 4 mBar. The line must be as right angled on the isobars as possible.

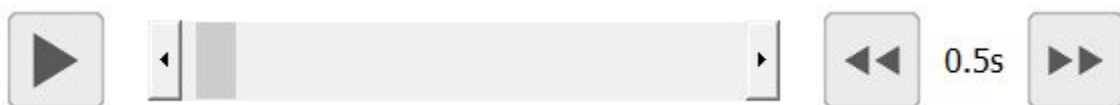
And now?

1. Open the service Weathermaps
2. Click on Bracknell
3. Choose *Update*



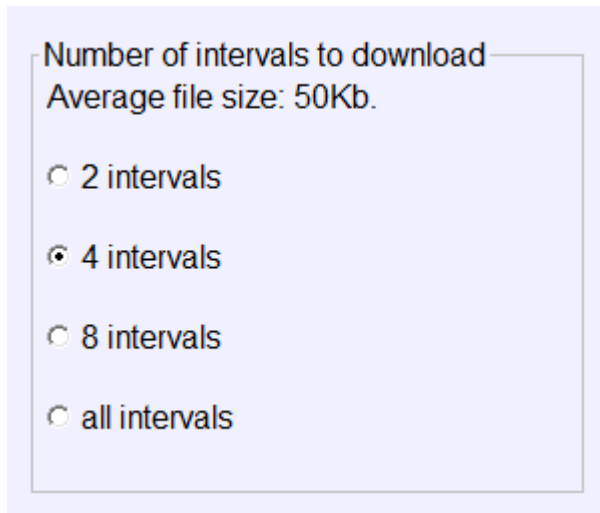
Result

The Weathercharts are being updated. Choose the play button on the top-left to cycle through the maps in sequence.

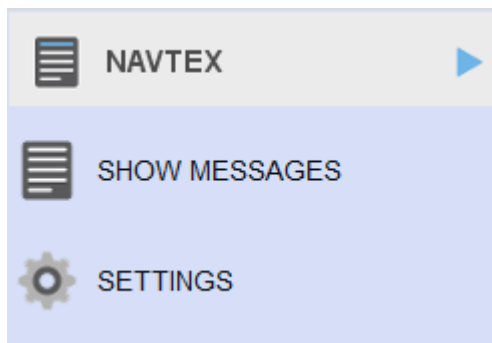


Tip:

In the settings screen (under the service weathermaps) you can choose how many maps you want to retrieve when choosing Update.



3.9 Navtex

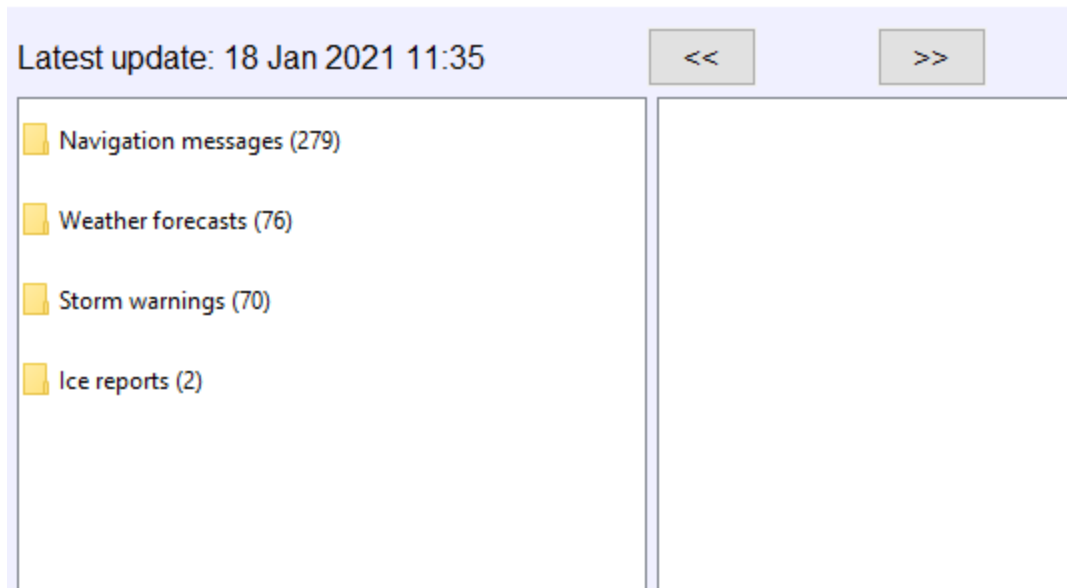


Navtex messages are messages that are automatically send every 24 hours. By making use of the Yachtcontrol Meteo, the latest navtex messages are always displayed.

And now?

1. Open the service 'Navtex'.
2. Choose '*Settings*'.

3. Choose how long the messages should be stored on your system.
4. Choose 'Save'.
5. Choose 'Show Messages'.
6. Choose 'Update'.



7. Choose a map, and then choose a message.

Result:

A Navtex message is visible on the right.

Latest update: 18 Jan 2021 11:35 << 1/279 >>

Navigation messages (279)

- 18-01-2021 11:31:54 Nederlandse Kustwacht
- 18-01-2021 11:31:54 Stockholm
- 18-01-2021 11:31:54 Niton
- 18-01-2021 11:31:53 Nederlandse Kustwacht
- 18-01-2021 11:31:53 Portpatricks

PA93
NETHERLANDS COASTGUARD
NAVIGATIONAL WARNING NR. 93 091232 UTC JAN
UNDERWATER CABLE OPERATIONS IN PROGRESS BY ASSISTER OYUJ2
IN AN AREA BOUNDED BY
A: 51- 50.50N 02- 40.50E
B: 51- 50.25N 02- 40.25E
C: 51- 49.00N 02- 43.25E
D: 51- 50.00N 02- 43.25E
VESSEL LISTENING VHF1670
WIDE BERTH REQUESTED
NNNN